

[Get a Quote](#)

Overview

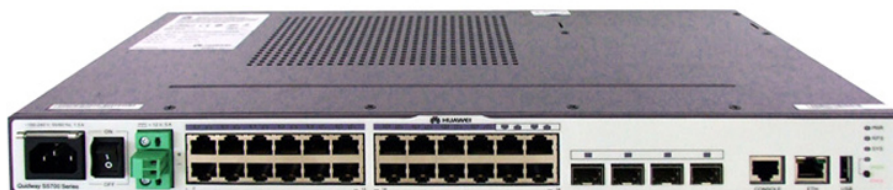
Huawei S5700-SI series are gigabit Layer 3 Ethernet switches. The S5700-24TP-SI-AC supports 20 10/100/1000BASE-T ports and 4 combo ports (10/100/1000BASE-T (PoE+) + 100/1000BASE-X).

Quick Specification

Table 1 shows the quick specification.

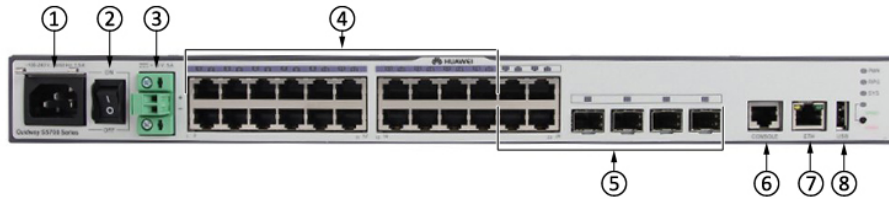
Model	S5700-24TP-SI-AC
Part Number	02352360
Description	24 Ethernet 10/100/1000 ports, 4 of which are dual-purpose 10/100/1000 or SFP, AC 110/220V, 1 extension slot
Ports	24 Ethernet 10/100/1,000 ports, 4 of which are dual-purpose 10/100/1,000 or SFP ports
Forwarding Performance	36 Mpps
Switching Capacity	256 Gbit/s
Stack	Supported by stack card
Stack Ports	Two stack ports available on each stack card
Power	AC 110/220V
Heat Dissipation	Built-in fans for intelligent air cooling
Memory (RAM)	256 MB
Flash	32 MB
Dimensions (W x D x H)	442.0 mm x 220.0 mm x 43.6 mm
Weight	3.9 Kg

Figure 1 shows the appearance of S5700-24TP-SI-AC.



Product Details

Figure 2 shows the front panel of S5700-24TP-SI-AC.



Note:

(1)	AC socket	(5)	Four combo ports (10/100/1000BASE-T + 100/1000BASE-X)
(2)	Power switch	(6)	One console port
(3)	Backup power socket	(7)	ETH management port
(4)	20 × 10/100/1000BASE-T ports	(8)	USB port

Figure 3 shows the back panel of S5700-24TP-SI-AC.



Note:

(1)	ESD jack	(2)	Rear card slot
-----	----------	-----	----------------

The Transceiver

Table 2 shows the recommended transceivers.

Model	Description
SFP-1000BaseT	Electrical Transceiver, SFP, GE, Electrical Interface Module (100m, RJ45)
eSFP-GE-SX-MM850	Optical Transceiver, eSFP, GE, Multi-mode Module (850nm, 0.55km, LC)
SFP-GE-LX-SM1310	Optical Transceiver, eSFP, GE, Single-mode Module (1310nm, 10km, LC)

S-SFP-GE-LH40-SM1310	Optical Transceiver, eSFP, GE, Single-mode Module (1310nm, 40km, LC)
S-SFP-GE-LH40-SM1550	Optical Transceiver, eSFP, GE, Single-mode Module (1550nm, 40km, LC)

Compare to Similar Items

Table 3 shows the comparison of Huawei S5700-24TP-SI-AC and S5700-24TP-PWR-SI.

Models	S5700-24TP-SI-AC	S5700-24TP-PWR-SI
Ports	24 Ethernet 10/100/1,000 ports, 4 of which are dual-purpose 10/100/1,000 or SFP ports	20 × PoE+ 10/100/1000BASE-T ports Four combo ports (10/100/1000BASE-T (PoE+) + 100/1000BASE-X)
PoE Supported	Not Supported	Yes
Software Version	Standard	Standard

Get more information

Do you have any question about the S5700-24TP-SI-AC (02352360)?

Contact us now via info@hi-network.com.

Specification

S5700-24TP-SI-AC Specification	
Manufacturer	Huawei
Manufacturer Part Number	S5700-24TP-SI-AC
Form Factor	Fixed, Stackable
Switch Port	20 GE ports, 4 GE Combo ports
Power Over Ethernet (PoE)	Non-POE
Extended slot	Provides an extended slot for a stack card
Max Stack bandwidth	48Gbps
DRAM Memory	256 MB
Flash Memory	32 MB
Performance	
Forwarding performance	36 Mpps
MAC address table	IEEE 802.1d compliance
	16 K MAC address entries
	MAC address learning and aging

	Static, dynamic, and blackhole MAC address entries
	Packet filtering based on source MAC addresses
VLAN	4 K VLANs
Reliability	RRPP ring topology and RRPP multi-instance
	Smart Link tree topology and Smart Link multi-instance, providing the millisecond-level protection switchover
	SEP
	STP, RSTP, and MSTP
	BPDU protection, root protection, and loop protection
	E-Trunk
IP routing	Static routing, ECMP
	RIPv1, RIPv2 and RIPv3
IPv6 features	Neighbor Discovery (ND)
	Path MTU (PMTU)
	IPv6 ping, IPv6 traceroute, and IPv6 Telnet
	ACLs based on the source IPv6 address, destination IPv6 address, Layer 4 ports, or protocol type
	MLD v1/v2 snooping
	6to4 tunnel, ISATAP tunnel, and manually configured tunnel
Multicast	IGMP v1/v2/v3 snooping and IGMP fast leave
	Multicast forwarding in a VLAN and multicast replication between VLANs
	Multicast load balancing among member ports of a trunk
	Controllable multicast
	Port-based multicast traffic statistics
QoS/ACL	Rate limiting on packets sent and received by an interface
	Packet redirection
	Port-based traffic policing and two-rate three-color CAR
	Eight queues on each port
	WRR, DRR, SP, WRR+SP, and DRR+SP queue scheduling algorithms
	Re-marking of the 802.1p priority and DSCP priority
	Packet filtering at Layers 2 through 4, filtering out invalid frames based on the source MAC address, destination
	MAC address, source IP address, destination IP address, port number, protocol type, and VLAN ID
	Rate limiting in each queue and traffic shaping on ports
Security	User privilege management and password protection
	DoS attack defense, ARP attack defense, and ICMP attack defense
	Binding of the IP address, MAC address, interface, and VLAN

	Port isolation, port security, and sticky MAC
	Blackhole MAC address entries
	Limit on the number of learned MAC addresses
	802.1x authentication and limit on the number of users on an interface
	AAA authentication, RADIUS authentication, HWTACACS authentication, and NAC
	SSH v2.0
	Hypertext Transfer Protocol Secure (HTTPS)
	CPU defense
	Blacklist and whitelist
Management	
Management and maintenance	Stacking
	MAC Forced Forwarding (MFF)
	Virtual cable test
	Port mirroring and RSPAN (remote port mirroring)
	Remote configuration and maintenance by using Telnet
	SNMP v1/v2/v3
	RMON
	Web NMS
	HGMP
	System logs and alarms of different levels
	GVRP
MUX VLAN	
Power Supply Specifications	
Power Device	Power supply - Non-PoE
Power Redundancy	No
Voltage Required	AC 120/230 V (50/60 Hz)
Dimensions / Weight / Miscellaneous	
Width	44.2cm
Depth	43.6cm
Height	22.0cm
Weight	5.0kg
MTBF	37years
System Software	
Software Version	Standard Version
Manufacturer Warranty	

Service & Support	1 year warranty
-------------------	-----------------

Want to Buy

Get a Quote



[Learn More](#) about Hi-Network



[Search](#) our Resource Library



[Follow](#) us on LinkedIn



Contact for [Sales or Support](#)

Contact HI-NETWORK.COM For Global Fast Shipping

HongKong Office Tel: +00852-66181601

HangZhou Office Tel: +0086-571-86729517

Email: info@hi-network.com

Skype: echo.hinetwork

WhatsApp Business: +8618057156223