

Get a Quote

Overview

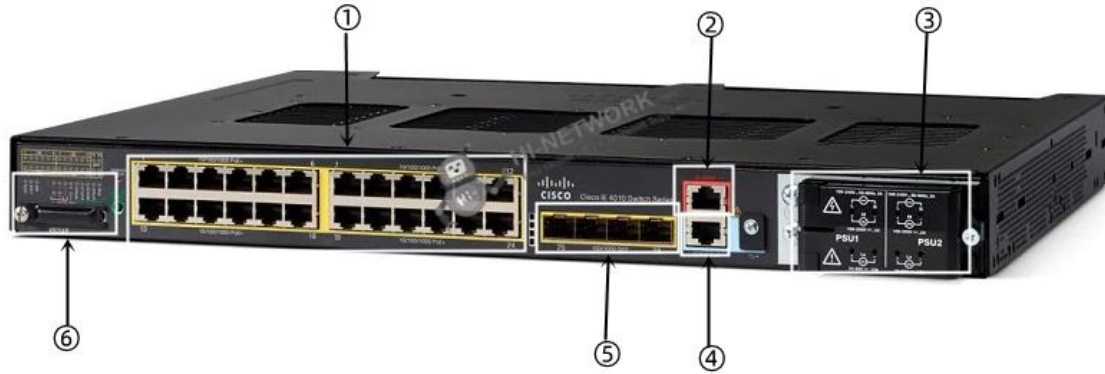
IE-4010-4S24P is an IE4010 series switch providing 4x 1G SFP, 24 10/100/1000 GE PoE, and LAN Base. Cisco Industrial Ethernet (IE) 4010 Series Switches with 28 Gigabit Ethernet interfaces are high-performance ruggedized Layer2/3 switches with high-density Power-over-Ethernet (PoE) capabilities, making them an ideal choice for use as access switches in industrial environments. The 4010 delivers comprehensive Cisco IOS® Software security features and high-availability ring protocols. The switch is ideal for outdoor enclosures or harsh environments while adhering to overall IT network design, compliance, and performance requirements.

Quick Specification

Part Number	IE-4010-4S24P
Total Ports	28
Uplinks	4 SFP (100MB/1G)
Copper 10/100/1000 PoE/PoE+ Ports	24 (10/100/1000M)
Default software	LAN Base feature set (Can be upgraded to IP Services license.)
Dimensions, (H x W x D)	1.75 x 17.5 x 14.0 in. (4.45 x 44.5 x 35.6 cm), 1 RU (rack unit) height with PWR-RGD-AC-DC-H / PWR-RGD-LOW-DC-H 1.75 x 17.5 x 15.18 in. (4.45 x 44.5 x 38.56 cm), 1 RU (rack unit) height with PWR-RGD-AC-DC-250
Weight	Without power supply: 12.1 lb (5.46 kg) PWR-RGD-AC-DC-H: 2.55 lb (1.16 kg) PWR-RGD-LOW-DC-H: 2.5 lb (1.13 kg) PWR-RGD-AC-DC-250: 3.1 lb (1.4 kg)

Product Details:

The Front Panel:



①	24 (10/100/1000M)
②	Alarm contacts
③	Field Replaceable Power supplies
④	Console port
⑤	4 SFP (100MB/1G)
⑥	Swap Drive: SD Flash

Supported Products

Model	Description
L-IE4000-RTU=	Electronic IP SERVICES License for IE4000 Switches
C1F1PIE4K5K1K9	Cisco ONE Foundation Perpetual - IE 4000/5000
C1A1PIE40001K9	Cisco ONE Advanced Perpetual - IE 4000
PWR-RGD-AC-DC-H=	Hazloc grade power supply high voltage (88-300VDC/85-264VAC), 150W
PWR-RGD-AC-DC-250	Higher PoE, 250W PSU for IE4010/5000, 100-240VAC/100-250VDC
PWR-RGD-LOW-DC-H	IE4010/5000 Hazloc Pwr Supply Low DC 24-60V/10A
GLC-SX-MM-RGD	Cisco GLC-SX-MM-RGD 1000Mbps Multi-Mode Rugged SFP
GLC-BX40-U-1	1000BASE-BX10 SFP module for single-strand SMF, 1310-nm TX/1550-nm RX wavelength, single LC/PC connector
GLC-TE	1000BASE-T SFP transceiver module for Category 5 copper wire
GLC-ZX-SM	1000BASE-ZX SFP
GLC-BX-U	1000BASE-BX SFP, 1310NM
SFP-GE-L	1000BASE-LX/LH SFP (DOM)

GLC-ZX-SMD	Cisco GLC-ZX-SMD 1000BASE-ZX SFP tranceiver module, SMF, 1550nm, DOM
GLC-SX-MMD	Cisco GLC-SX-MMD 1000BASE-SX SFP tranceiver module, MMF, 850nm, DOM
GLC-FE-100EX	100BASE-EX SFP (40km)
GLC-FE-100BX-U	100BASE-BX10-U SFP

Compare To Similar Items

Part Number	IE-4010-16S12P	IE-4010-4S24P
Total Ports	28	28
Uplinks	4 SFP (100MB/1G)	4 SFP (100MB/1G)
SFP fiber ports	12 (100/1000M)	N/A
Copper 10/100/1000 PoE/PoE+ Ports	12 (10/100/1000M)	12 (10/100/1000M)
Default software	LAN Base feature set (Can be upgraded to IP Services license.)	LAN Base feature set (Can be upgraded to IP Services license.)

Get more information:

Do you have any question about the IE-4010-4S24P?

Contact us now via e-mail: info@hi-network.com

Specific Data Sheet:

Total Ports	28
Uplinks	4 SFP (100MB/1G)
Copper 10/100/1000 PoE/PoE+ Ports	24 (10/100/1000M)
Default software	LAN Base feature set (Can be upgraded to IP Services license.)
Hardware	<ul style="list-style-type: none"> • 1 GBDRAM • 128 MB onboard flash memory • 1-GB removable SD flash memory card • Mini-USB and traditional RJ-45 console connector
Alarm	Alarm I/O: four alarm inputs to detect dry contact open or closed, one Form C alarm output relay
Dimensions, (H x W x D)	<ul style="list-style-type: none"> • 1.75 x 17.5 x 14.0 in. (4.45 x 44.5 x 35.6 cm), 1 RU (rack unit) height with PWR-RGD-AC-DC-H / PWR RGD- LOW-DC-H • 1.75 x 17.5 x 15.18 in. (4.45 x 44.5 x 38.56 cm), 1 RU (rack unit) height with PWR-RGD-AC-DC-250
Weight	<ul style="list-style-type: none"> • Without power supply: 12.1 lb (5.46 kg) • PWR-RGD-AC-DC-H:2.55 lb (1.16 kg) • PWR-RGD-LOW-DC-H:2.5 lb (1.13 kg) • PWR-RGD-AC-DC-250: 3.1 lb (1.4 kg)

Power consumption	<ul style="list-style-type: none"> • Maximum of 90W not including PoE consumption
Accessories	<ul style="list-style-type: none"> • SD-IE-1GB= - Spare SD card • L-IE4000-RTU= -Electronic RTU IP services software license for 4010 switches • 21-in. and 23-in. ETSI rack mount brackets
Forwarding bandwidth	28 Gbps (line rate/non-blocking)
Switching bandwidth	56 Gbps(Switching bandwidth is full-duplex capacity)
Forwarding rate	41.67 Mpps with 64 byte packets (line rate for all ports and packet sizes)
Number of queues	4 egress
Unicast MAC addresses	16000
IGMP multicast groups	1000
Number of VLANs	1000
IPv4 MAC security ACEs	1000 with default TCAM template
NAT translation	Bidirectional, 128 unique subnet NAT translation entries, which can expand to tens of thousands of translated entries if designed properly

Want to Buy?

Order Now

Get a Quote



Learn Moreabout Hi-Network



Search our Resource Library



Follow us on LinkedIn



Contact for Sales or Support

Contact HI-NETWORK.COM For Global Fast Shipping

HongKong Office Tel: +00852-66181601

HangZhou Office Tel: +0086-571-86729517

Email: info@hi-network.com

Skype: echo.hinetwork