

[Get a Quote](#)

Overview

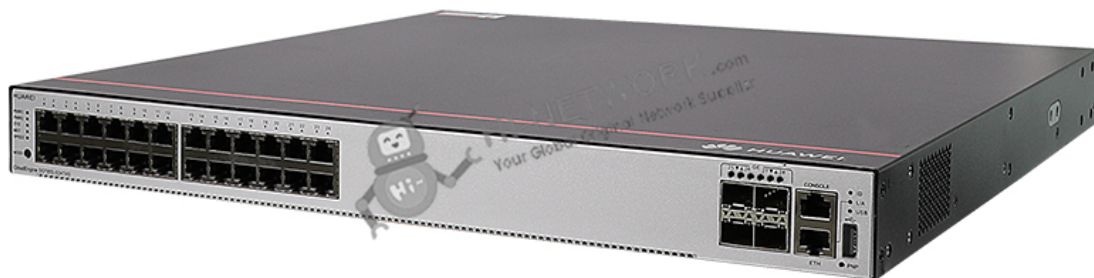
S5735S-S24T4S-A is the Huawei S5735-S switch with 24 × 10/100/1000Base-T ports, 4 × GE SFP ports, and 1 × 60W AC Power Supply. Huawei CloudEngine S5735S-S is a series of standard gigabit access switches that provide 24–48 flexible all-GE downlink ports and four fixed 10 GE uplink ports. They are designed for enterprise campus network access and aggregation, as well as data center access. Built on next-generation, high-performance hardware and with the Huawei Versatile Routing Platform (VRP), CloudEngine S5735-S switches boast advanced features, such as enhanced Layer 3 functionality, simplified O&M, flexible Ethernet networking, and mature IPv6 capabilities.

Quick Specification

Table 1 shows the Quick Specification.

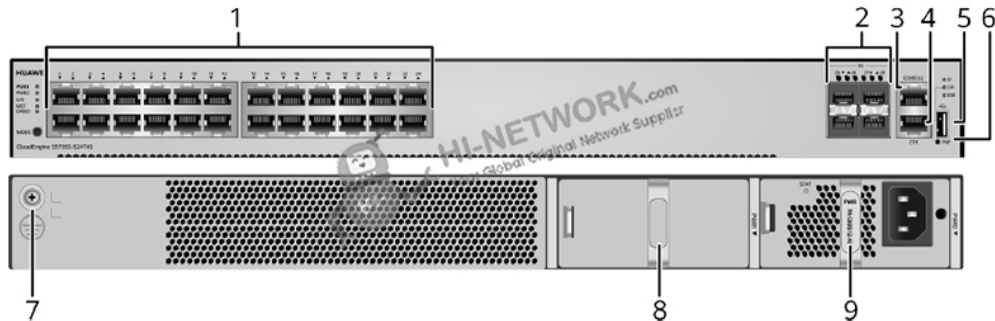
Model	S5735S-S24T4S-A
Part Number	98010939
Description	S5735S-S24T4S-A bundle (24*10/100/1000BASE-T ports, 4*GE SFP ports, 1 AC power module)
First supported version	V200R019C00
Memory	1 GB
Flash memory	512 MB in total. To view the available flash memory size, run the display version command.
PoE	Not supported
Weight with packaging [kg(lb)]	7.89
Dimensions without packaging (H x W x D) [mm(in.)]	<p>Basic dimensions (excluding the parts protruding from the body): 43.6 mm x 442.0 mm x 420.0 mm (1.72 in. x 17.40 in. x 16.54 in.)</p> <p>Maximum dimensions (the depth is the distance from ports on the front panel to the parts protruding from the rear panel): 43.6 mm x 442.0 mm x 444.2 mm (1.72 in. x 17.40 in. x 17.49 in.)</p>

Figure 1 shows the appearance of S5735S-S24T4S-A.



Product Details

Figure 2 shows the structure of S5735S-S24T4S-A.



Note:

(1)	Twenty-four 10/100/1000BASE-T ports	(6)	One PNP button
(2)	Four 1000BASE-X ports	(7)	Ground screw
(3)	One console port	(8)	Power module slot 1
(4)	One ETH management port	(9)	Power module slot 2
(5)	One USB port		

Get More Information

Do you have any question about the S5735S-S24T4S-A (98010939)?

Contact us now via info@hi-network.com.

Specification

S5735S-S24T4S-A Specification	
Model	S5735S-S24T4S-A
Part Number	98010939
Description	S5735S-S24T4S-A bundle (24*10/100/1000BASE-T ports, 4*GE SFP ports, 1 AC power module)
Dimensions without packaging (H x W x D) [mm(in.)]	<p>Basic dimensions (excluding the parts protruding from the body): 43.6 mm x 442.0 mm x 420.0 mm (1.72 in. x 17.40 in. x 16.54 in.)</p> <p>Maximum dimensions (the depth is the distance from ports on the front panel to the parts protruding from the rear panel): 43.6 mm x 442.0 mm x 444.2 mm (1.72 in. x 17.40 in. x 17.49 in.)</p>
Chassis height [U]	1
Weight with packaging [kg(lb)]	7.89

Typical power consumption [W]	29
Typical heat dissipation [BTU/hour]	98.95
Maximum power consumption [W]	44
Maximum heat dissipation [BTU/hour]	150.1
MTBF [year]	69.42
MTTR [hour]	2
Availability	>0.99999
Noise at normal temperature (acoustic power) [dB(A)]	58.9
Noise at normal temperature (acoustic pressure) [dB(A)]	43.8
Number of card slots	0
Number of power slots	2
Number of fans modules	2
Redundant power supply	1+1 Pluggable AC and DC power modules can be used together in the same switch, but power modules that use natural heat dissipation and power modules that use air cooling cannot be used together.
Long-term operating temperature [°C(°F)]	-5°C to +50°C (23°F to 122°F) at an altitude of 0-1800 m (0-5906 ft.)
Short-term operating temperature [°C(°F)]	-5°C to +55°C (23°F to 131°F) at an altitude of 0-1800 m (0-5906 ft.)
Restriction on the operating temperature variation rate [°C(°F)]	<p>When the altitude is 1800–5000 m (5906–16404 ft.), the highest operating temperature reduces by 1°C (1.8°F) every time the altitude increases by 220 m (722 ft.).</p> <p>The device can work for a short period of time when the operating temperature is beyond the normal range, but the following conditions must be met:</p> <ul style="list-style-type: none"> - The operating temperature can exceed 45°C (113°F) for a maximum of 96 consecutive hours in a year. - The total time when the operating temperature exceeds 45°C (113°F) in a year is less than or equal to 360 hours. - The number of times the operating temperature exceeds 45°C (113°F) is less than or equal to 15 in one year. <p>If any of the preceding conditions is not met, the device may be damaged or an unknown error may occur.</p> <p>Devices cannot start when the temperature is lower than 0°C (32°F). The maximum transmission distance of an optical module used for short-term operation cannot exceed 10 km.</p>
Storage temperature [°C(°F)]	-40°C to +70°C (-40°F to +158°F)
Long-term operating relative humidity [RH]	5% to 95%, noncondensing
Long-term operating altitude [m(ft.)]	0-5000 m (0-16404 ft.)
Storage altitude [m(ft.)]	0-5000 m (0-16404 ft.)
Power supply mode	Pluggable power supply
Rated input voltage [V]	<ul style="list-style-type: none"> - AC input: 100 V AC to 240 V AC; 50/60 Hz - High-voltage DC input: 240 V DC - DC input: -48 V DC to -60 V DC
Input voltage range [V]	- AC input: 90 V AC to 264 V AC; 47 Hz to 63 Hz

	<ul style="list-style-type: none"> - High-voltage DC input: 190 V DC to 290 V DC - DC input: -38.4 V DC to -72 V DC
Memory	1 GB
Flash memory	512 MB in total. To view the available flash memory size, run the display version command.
Console port	RJ45
Eth Management port	RJ45
USB	Supported
RTC	Supported
RPS input	Not supported
Service port surge protection [kV]	Common mode: ± 7 kV
Power supply surge protection [kV]	<ul style="list-style-type: none"> - AC power module configured: ± 6 kV in differential mode, ± 6 kV in common mode - DC power module configured: ± 2 kV in differential mode, ± 4 kV in common mode
Types of fans	Built-in
Heat dissipation mode	Heat dissipation with fan, intelligent fan speed adjustment
Airflow direction	Air intake from left, front and right, air exhaustion from behind
PoE	Not supported
Certification	<ul style="list-style-type: none"> EMC certification Safety certification Manufacturing certification

Want to Buy

[Get a Quote](#)

[Learn More](#) about Hi-Network

[Search](#) our Resource Library

[Follow](#) us on LinkedIn

 Contact for [Sales or Support](#)

Contact HI-NETWORK.COM For Global Fast Shipping

HongKong Office Tel: +00852-66181601

HangZhou Office Tel: +0086-571-86729517

 Email: info@hi-network.com

Skype: echo.hinetwork

WhatsApp Business: +8618057156223

