

[Get a Quote](#)

Overview

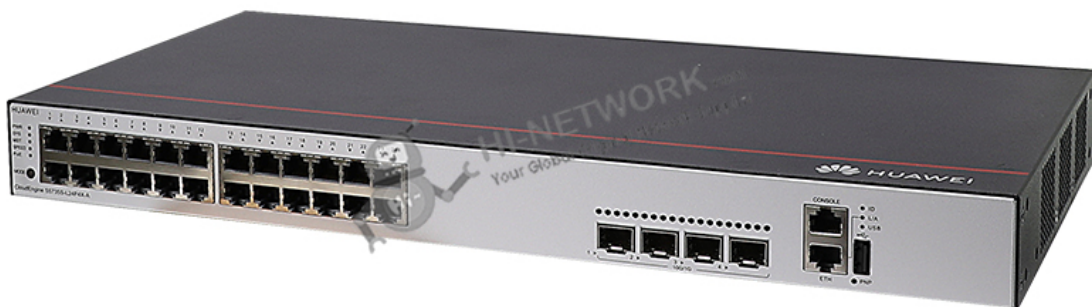
S5735S-L24P4X-A is the Huawei S5735-L switch with 24 x 10/100/1000Base-T ports, 4 x 10 GE SFP+ ports, PoE+, Distribution Model. Huawei CloudEngine S5735-L is a series of simplified gigabit access switches that provide 12–48 flexible all-GE downlink ports and four fixed GE or 10 GE uplink ports. They are designed for enterprise campus network access and gigabit to the desktop. Built on next-generation, high-performance hardware and powered by Huawei's Versatile Routing Platform (VRP), CloudEngine S5735-L switches feature flexible Ethernet networking, diversified security control, and support for multiple Layer 3 routing protocols — providing higher performance and more powerful service processing capabilities for networks.

Quick Specification

Table 1 shows the Quick Specification.

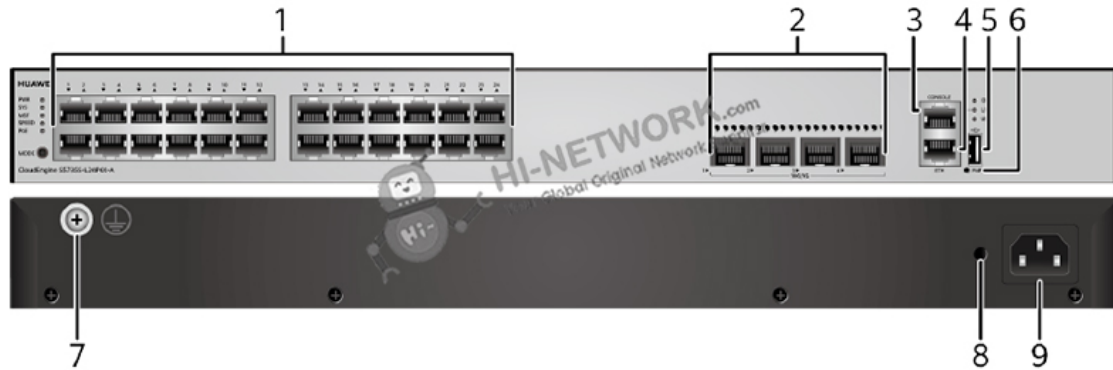
Model	S5735S-L24P4X-A
Part Number	98010928
Description	S5735S-L24P4X-A (24*10/100/1000BASE-T ports, 4*10GE SFP+ ports, PoE+, AC power)
First supported version	V200R019C00
Memory	1 GB
Flash memory	512 MB in total. To view the available flash memory size, run the display version command.
PoE	Supported
Weight with packaging [kg(lb)]	4.31
Dimensions without packaging (H x W x D) [mm(in.)]	<p>Basic dimensions (excluding the parts protruding from the body): 43.6 mm x 442.0 mm x 220.0 mm (1.72 in. x 17.4 in. x 8.7 in.)</p> <p>Maximum dimensions (the depth is the distance from ports on the front panel to the parts protruding from the rear panel): 43.6 mm x 442.0 mm x 227.0 mm (1.72 in. x 17.4 in. x 8.94 in.)</p>

Figure 1 shows the appearance of S5735S-L24P4X-A.



Product Details

Figure 2 shows the structure of S5735S-L24P4X-A.



Note:

(1)	Twenty-four PoE+ 10/100/1000BASE-T ports	(6)	One PNP button
(2)	Four 10GE SFP+ ports	(7)	Ground screw
(3)	One console port	(8)	Jack for AC power cable locking strap
(4)	One ETH management port	(9)	AC socket
(5)	One USB port		

Get More Information

Do you have any question about the S5735S-L24P4X-A (98010928)?

Contact us now via info@hi-network.com.

Specification

S5735S-L24P4X-A Specification	
Model	S5735S-L24P4X-A
Part Number	98010928
Description	S5735S-L24P4X-A (24*10/100/1000BASE-T ports, 4*10GE SFP+ ports, PoE+, AC power)
First supported version	V200R019C00
Dimensions without packaging (H x W x D) [mm(in.)]	<p>Basic dimensions (excluding the parts protruding from the body): 43.6 mm x 442.0 mm x 220.0 mm (1.72 in. x 17.4 in. x 8.7 in.)</p> <p>Maximum dimensions (the depth is the distance from ports on the front panel to the parts protruding from the rear panel): 43.6 mm x 442.0 mm x 227.0 mm (1.72 in. x 17.4 in. x 8.94 in.)</p>
Chassis height [U]	1

Weight with packaging [kg(lb)]	4.31
Typical power consumption [W]	43
Typical heat dissipation [BTU/hour]	146.72
Maximum power consumption [W]	- Not providing the PoE function: 56 W - 100% PoE loads: 458 W (PoE: 380 W)
Maximum heat dissipation [BTU/hour]	- Not providing the PoE function: 191.1 - 100% PoE loads: 1563
MTBF [year]	57.07
MTTR [hour]	2
Availability	>0.99999
Noise at normal temperature (acoustic power) [dB(A)]	57.7
Noise at normal temperature (acoustic pressure) [dB(A)]	43
Number of card slots	0
Number of power slots	0
Number of fans modules	2
Redundant power supply	Not supported
Long-term operating temperature [°C(°F)]	-5°C to +50°C (23°F to 122°F) at an altitude of 0-1800 m (0-5906 ft.)
Short-term operating temperature [°C(°F)]	-5°C to +55°C (23°F to 131°F) at an altitude of 0-1800 m (0-5906 ft.)
Restriction on the operating temperature variation rate [°C(°F)]	<p>When the altitude is 1800-5000 m (5906-16404 ft.), the highest operating temperature reduces by 1°C (1.8°F) every time the altitude increases by 220 m (722 ft.).</p> <p>The equipment can operate beyond the normal operating temperature range for a short-term period, but the following conditions must be met:</p> <ul style="list-style-type: none"> - The equipment operates at a temperature of over 50°C (122°F) consecutively for at most 96 hours in one year. - The equipment operates at a temperature of over 50°C (122°F) for a total of no more than 360 hours in one year. - The equipment operates at a temperature of over 50°C (122°F) for no more in 15 times in one year. <p>The equipment may be damaged or experience unexpected exceptions if any of the preceding limits is exceeded.</p> <p>The equipment cannot start when the temperature is lower than 0°C (32°F). The maximum distance of optical modules used in these conditions cannot exceed 10 km.</p>
Storage temperature [°C(°F)]	-40°C to +70°C (-40°F to +158°F)
Long-term operating relative humidity [RH]	5% to 95%, noncondensing
Long-term operating altitude [m(ft.)]	0-5000 m (0-16404 ft.)
Storage altitude [m(ft.)]	0-5000 m (0-16404 ft.)
Power supply mode	AC built-in
Rated input voltage [V]	- AC input: 100 V AC to 240 V AC, 50/60 Hz - High-Voltage DC input: 240 V DC
Input voltage range [V]	- AC input: 90 V AC to 290 V AC, 45 Hz to 65 Hz - High-Voltage DC input: 190 V DC to 290 V DC

Memory	1 GB
Flash memory	512 MB in total. To view the available flash memory size, run the display version command.
Console port	RJ45
Eth Management port	RJ45
USB	Supported
RTC	Not supported
RPS input	Not supported
Service port surge protection [kV]	Common mode: ± 7 kV
Power supply surge protection [kV]	± 6 kV in differential mode, ± 6 kV in common mode
Types of fans	Built-in
Heat dissipation mode	Heat dissipation with fan, intelligent fan speed adjustment
Airflow direction	Air intake from left and front, air exhaustion from right
PoE	Supported
Certification	EMC certification Safety certification Manufacturing certification

Want to Buy

[Get a Quote](#)

[Learn More](#) about Hi-Network

[Search](#) our Resource Library

[Follow](#) us on LinkedIn

 Contact for [Sales or Support](#)

Contact HI-NETWORK.COM For Global Fast Shipping

HongKong Office Tel: +00852-66181601

HangZhou Office Tel: +0086-571-86729517

 Email: info@hi-network.com

Skype: echo.hinetwork

WhatsApp Business: +8618057156223