

[Get a Quote](#)

Overview

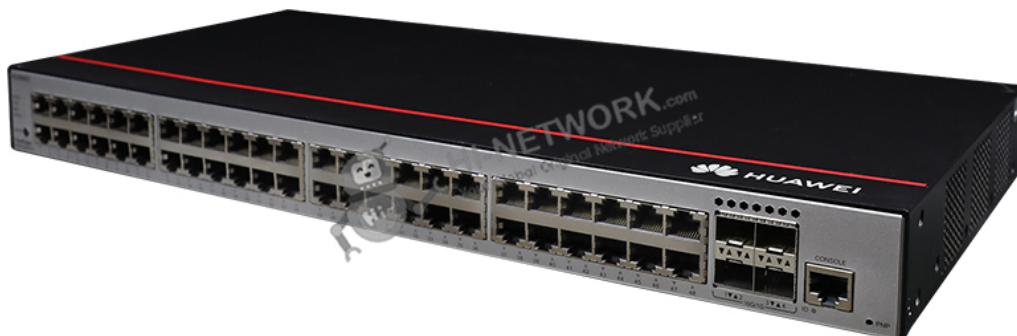
Built on next-generation, high-performance hardware and powered by Huawei's Versatile Routing Platform (VRP), CloudEngine S5735-L switches feature flexible Ethernet networking, diversified security control, and support for multiple Layer 3 routing protocols — providing higher performance and more powerful service processing capabilities for networks.

Quick Specification

Table 1 shows the Quick Specification.

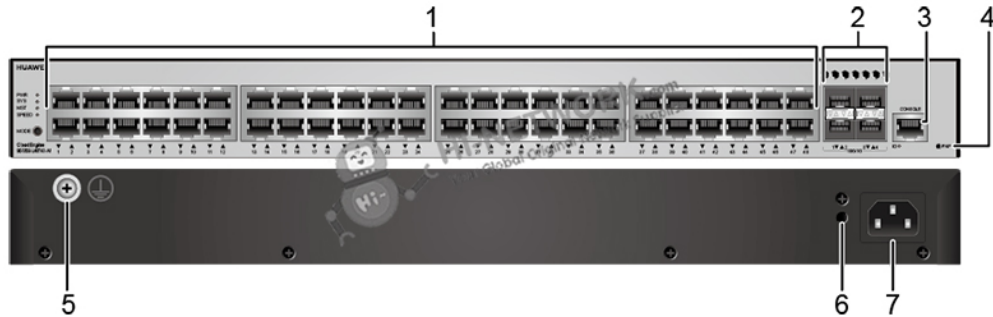
| | |
|--|---|
| Model | S5735S-L48T4X-A1 |
| Part Number | 98011338 |
| Description | S5735S-L48T4X-A1 (48*10/100/1000BASE-T ports, 4*10GE SFP+ ports, AC power) |
| First supported version | V200R020C10 |
| Memory | 512 MB |
| Flash memory | 512 MB |
| PoE | Not supported |
| Weight with packaging [kg(lb)] | 3.74 kg (8.25 lb) |
| Dimensions without packaging (H x W x D) [mm(in.)] | <p>Basic dimensions (excluding the parts protruding from the body): 43.6 mm x 442.0 mm x 220.0 mm (1.72 in. x 17.4 in. x 8.7 in.)</p> <p>Maximum dimensions (the depth is the distance from ports on the front panel to the parts protruding from the rear panel): 43.6 mm x 442.0 mm x 227.0 mm (1.72 in. x 17.4 in. x 8.94 in.)</p> |

Figure 1 shows the appearance of S5735S-L48T4X-A1.



Product Details

Figure 2 shows the structure of S5735S-L48T4X-A1.



Note:

| | | | |
|-----|-------------------------------------|-----|---------------------------------------|
| (1) | Forty-eight 10/100/1000BASE-T ports | (5) | Ground screw |
| (2) | Four 10GE SFP+ ports | (6) | Jack for AC power cable locking strap |
| (3) | One console port | (7) | AC socket |
| (4) | One PNP button | | |

Get More Information

Do you have any question about the S5735S-L48T4X-A1 (98011338)?

Contact us now via info@hi-network.com.

Specification

| S5735S-L48T4X-A1 Specification | |
|--|--|
| Model | S5735S-L48T4X-A1 |
| Part Number | 98011338 |
| Description | S5735S-L48T4X-A1 (48*10/100/1000BASE-T ports, 4*10GE SFP+ ports, AC power) |
| First supported version | V200R020C10 |
| Remarks | Some models cannot be downgraded due to component upgrade. Therefore, you are advised to run the display system-software information command (supported in V200R021C00 and later versions) to check the software versions supported by the device before performing a downgrade. |
| Dimensions without packaging (H x W x D) [mm(in.)] | Basic dimensions (excluding the parts protruding from the body): 43.6 mm x 442.0 mm x 220.0 mm (1.72 in. x 17.4 in. x 8.7 in.) Maximum dimensions (the depth is the distance from ports on the front panel to the parts protruding from the rear panel): 43.6 mm x 442.0 mm x 227.0 mm (1.72 in. x 17.4 in. x 8.94 in.) |

| | |
|--|---|
| Dimensions with packaging (H x W x D) [mm(in.)] | 90.0 mm x 550.0 mm x 360.0 mm (3.54 in. x 21.65 in. x 14.17 in.) |
| Chassis height [U] | 1 |
| Weight without packaging [kg(lb)] | 2.76 kg (6.09 lb) |
| Weight with packaging [kg(lb)] | 3.74 kg (8.25 lb) |
| Typical power consumption [W] | 43.3 |
| Typical heat dissipation [BTU/hour] | 147.74 |
| Maximum power consumption [W] | 50.4 |
| Maximum heat dissipation [BTU/hour] | 171.97 |
| MTBF [year] | 55.33 |
| MTTR [hour] | 2 |
| Availability | >0.99999 |
| Noise at normal temperature (acoustic power) [dB(A)] | 48 |
| Noise at normal temperature (acoustic pressure) [dB(A)] | 36.2 |
| Number of card slots | 0 |
| Number of power slots | 0 |
| Number of fans modules | 1 |
| Redundant power supply | Not supported |
| Long-term operating temperature [°C(°F)] | -5°C to +50°C (23°F to 122°F) at an altitude of 0-1800 m (0-5906 ft.) |
| Short-term operating temperature [°C(°F)] | -5°C to +55°C (23°F to 131°F) at an altitude of 0-1800 m (0-5906 ft.) |
| Restriction on the operating temperature variation rate [°C(°F)] | <p>When the altitude is 1800-5000 m (5906-16404 ft.), the highest operating temperature reduces by 1°C (1.8°F) every time the altitude increases by 220 m (722 ft.).</p> <p>The operating temperature ranges from -5°C to +45°C (23°F to 113°F) when optical modules with transmission distances greater than or equal to 70 km are used.</p> <p>The equipment can operate beyond the normal operating temperature range for a short-term period, but the following conditions must be met:</p> <ul style="list-style-type: none"> - The equipment operates at a temperature of over 50°C (122°F) consecutively for at most 96 hours in one year. - The equipment operates at a temperature of over 50°C (122°F) for a total of no more than 360 hours in one year. - The equipment operates at a temperature of over 50°C (122°F) for no more in 15 times in one year. <p>The equipment may be damaged or experience unexpected exceptions if any of the preceding limits is exceeded.</p> <p>The equipment cannot start when the temperature is lower than 0°C (32°F). The maximum distance of optical modules used in these conditions cannot exceed 10 km.</p> |
| Storage temperature [°C(°F)] | -40°C to +70°C (-40°F to +158°F) |
| Long-term operating relative humidity [RH] | 5% to 95%, noncondensing |
| Long-term operating altitude [m(ft.)] | 0-5000 m (0-16404 ft.) |
| Storage altitude [m(ft.)] | 0-5000 m (0-16404 ft.) |
| Power supply mode | AC built-in |

| | |
|------------------------------------|--|
| Rated input voltage [V] | AC input: 100 V AC to 240 V AC, 50/60 Hz |
| Input voltage range [V] | AC input: 90 V AC to 264 V AC, 47 Hz to 63 Hz |
| Memory | 512 MB |
| Flash memory | 512 MB |
| Console port | RJ45 |
| Eth Management port | Not supported |
| USB | Not supported |
| RTC | Not supported |
| RPS input | Not supported |
| Service port surge protection [kV] | Common mode: ± 7 kV |
| Power supply surge protection [kV] | ± 6 kV in differential mode, ± 6 kV in common mode |
| Types of fans | Built-in |
| Heat dissipation mode | Heat dissipation with fan, intelligent fan speed adjustment |
| Airflow direction | Air intake from left and front, air exhaustion from right |
| PoE | Not supported |
| Certification | EMC certification Safety certification Manufacturing certification |

Want to Buy

[Get a Quote](#)

[Learn More](#) about Hi-Network

[Search](#) our Resource Library

[Follow](#) us on LinkedIn

 Contact for [Sales or Support](#)

Contact HI-NETWORK.COM For Global Fast Shipping

HongKong Office Tel: +00852-66181601

HangZhou Office Tel: +0086-571-86729517

 Email: info@hi-network.com

Skype: echo.hinetwork

WhatsApp Business: +8618057156223

